

ASSEMBLY INSTRUCTIONS

Caution !

Watch your fingers when adjusting clamps. They may become pinched resulting in injury.
Be careful around pipe ends, inside the pipe and screw ends. Metal shavings, etc. May injure your fingers.

Inside This Package

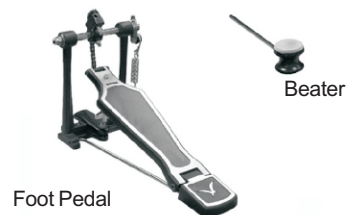
Before assembly, please make sure that all the items listed below are present.

[CYMBAL PADS] box

Cymbal Pad x 3



[Kick Trigger] box



[DRUM PADS] box

Tom Pad x 2

Snare Pad x 1



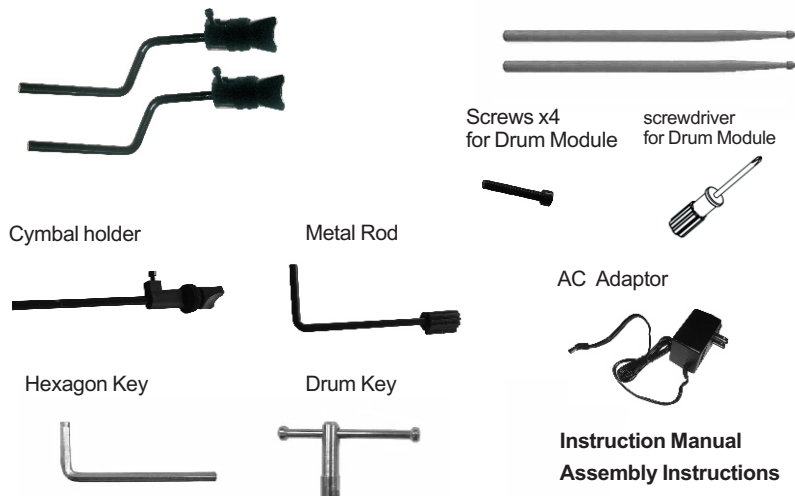
Kick Pad



[ACCESSORIES] box

Cymbal holders (L & R)

Drumstick x 2



[DRUM MODULE and HEADPHONES] box

Drum module



HEADPHONES



Stand



Round Seat



Standard-gauge tubing



Double-Braced Legs



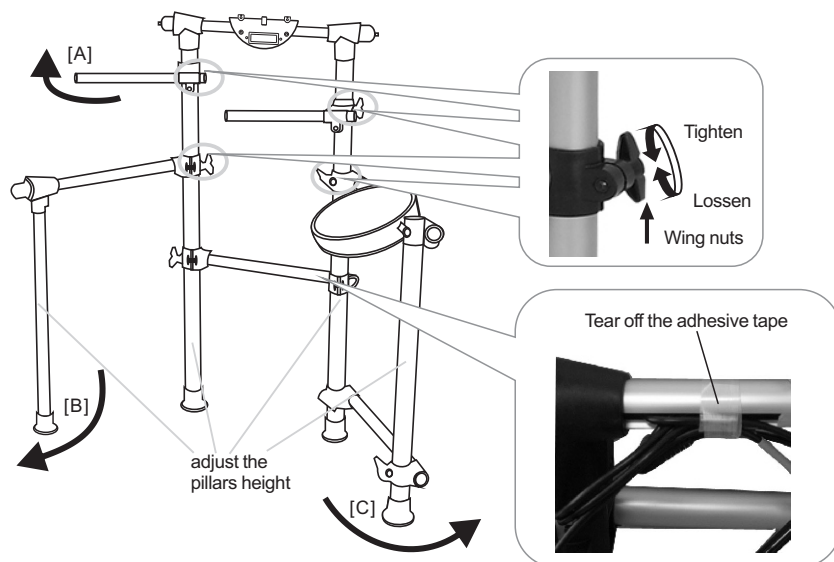
[HI-HAT PEDAL] box

Hi-Hat control pedal



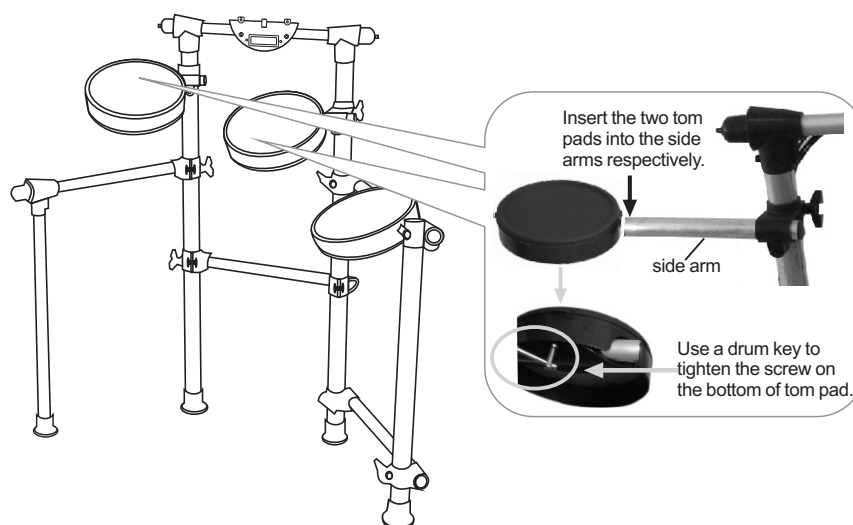
1 Open the stand

- [1] Tear off the adhesive tape on the stand.
- [2] Loosen the wing nuts on the pillars.
- [3] Open the stand in the order shown in the illustration (A, B, C).
- [4] Adjust the pillars height so that the stand can locate steadily on the floor.
- [5] Tighten the wing nuts on the pillars.



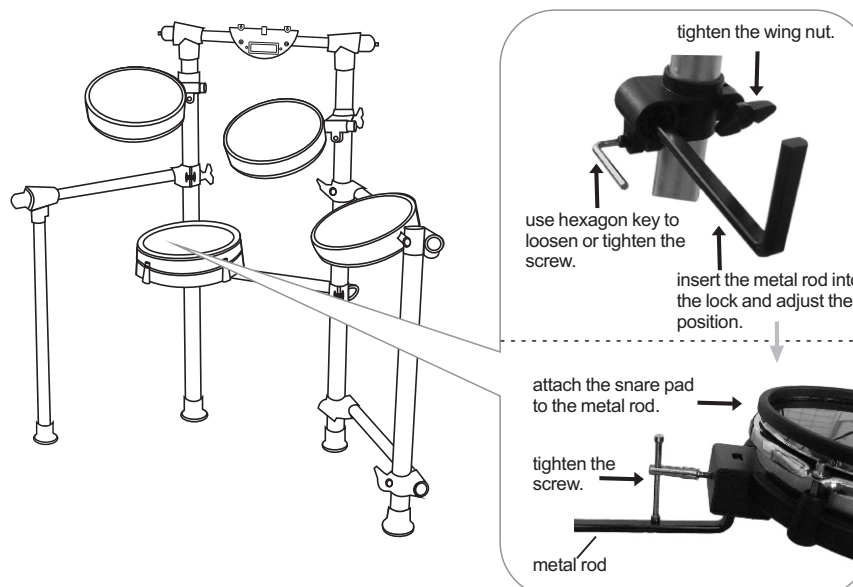
2 Attaching the tom pads

- [1] Insert the two tom pads into the side arms respectively.
- [2] Use a drum key to tighten the screw on the bottom of tom pad.
- [3] Adjust the side arms height so that it does not interfere with other pads.
- [4] Tighten the wing nuts on the pillars.



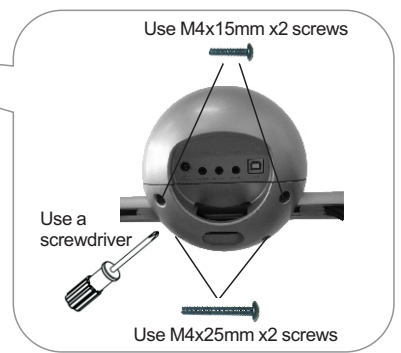
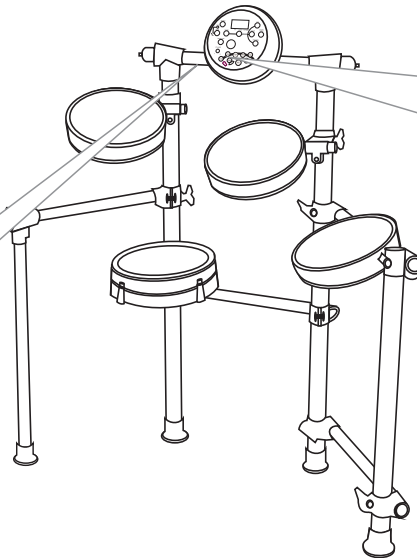
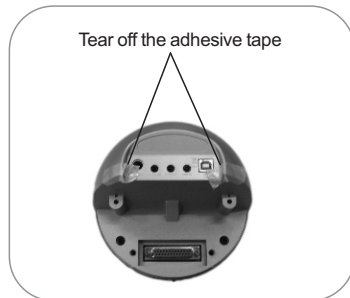
3 Attaching the snare pad

- [1] Adjust the clamp position, then tighten the wing nuts on the clamp.
- [2] Use hexagon key to loosen the screw of holder clamp.
- [3] Insert the metal rod into the holder clamp and adjust the position.
- [4] Use hexagon key to tighten the screw of holder clamp.
- [5] Attach the snare pad to the metal rod and adjust the position, then tighten the screw on the snare pad.



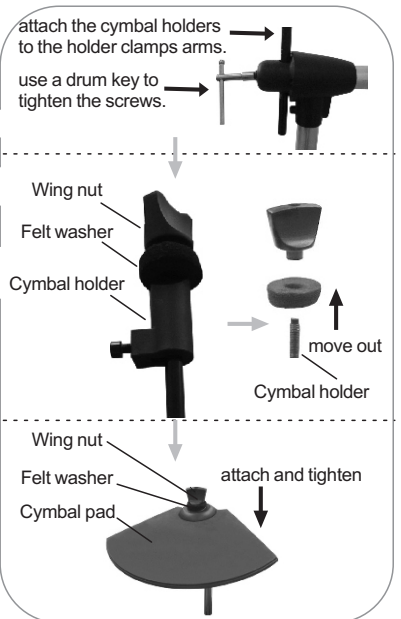
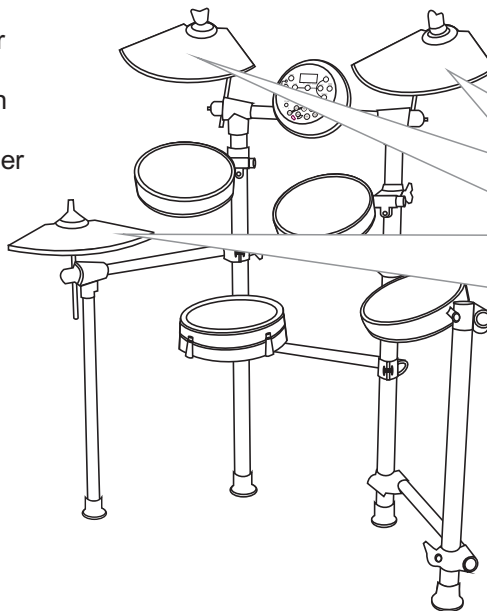
4 Attaching the Drum Module

- [1] Tear off the adhesive tape on the drum module.
- [2] Place the Drum Module on the drum module holder, and use the included screws to fasten it.



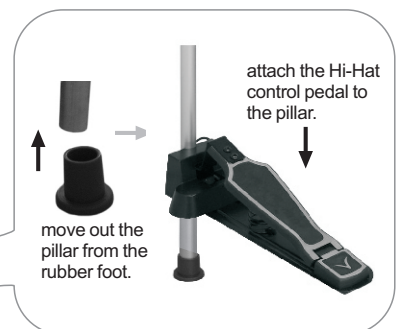
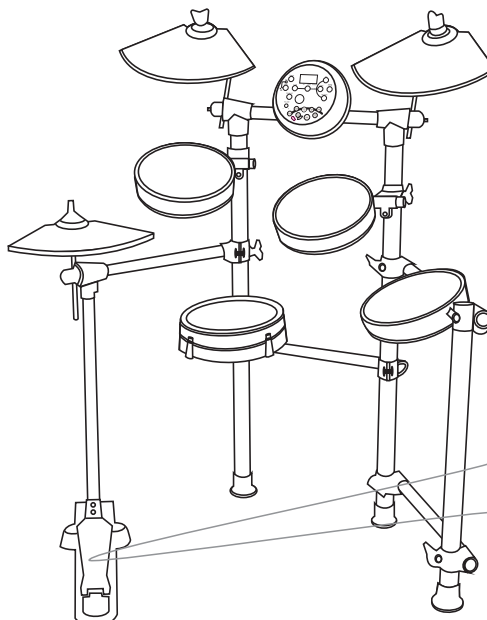
5 Attaching the cymbal pads

- [1] Attach the Cymbal holders to the Holder clamps on the arms.
- [2] Use a drum key to tighten the screws on the Holder clamps.
- [3] Move out the wing nut and the felt washer of each Cymbal holders.
- [4] Attach the Cymbal pads to the cymbal holders.
- [5] Attach the felt washer and wing nut, tighten the wing nut of each cymbal.



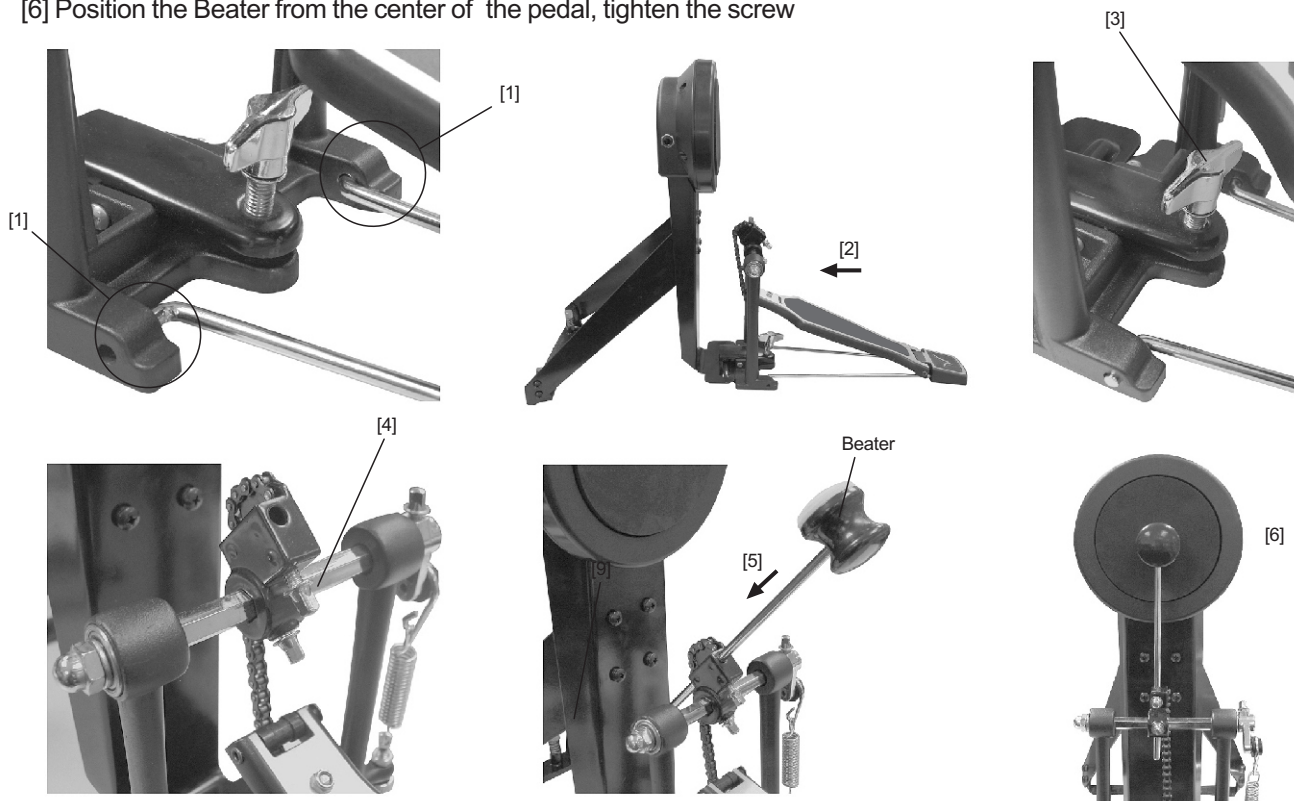
6 Attaching the Hi-Hat Control pedal

- [1] Move out the pillar from the rubber foot.
- [2] Attach the Hi-Hat control pedal to the pillar.



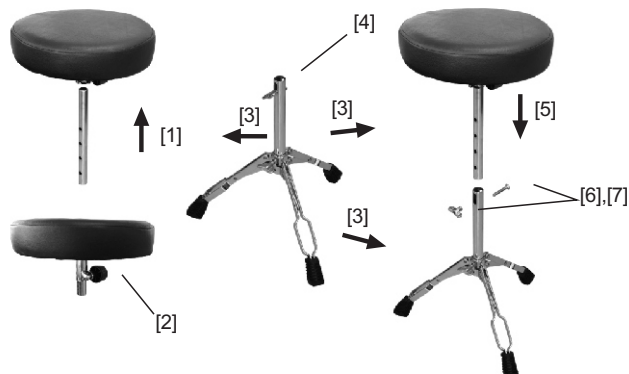
7 Attaching the Kick Trigger

- [1] Attach the Rod to the holders.
- [2] Attach the Kick Pedal to the Kick Pad.
- [3] Tighten the wing screw on the Kick Pedal.
- [4] Loosen the screw.
- [5] Attach the Beater to the Kick Pedal
- [6] Position the Beater from the center of the pedal, tighten the screw



8 Attaching the Drum Throne

- [1] Attach the standard-gauge tubing to the round seat.
- [2] Tighten the wing nut on the round seat.
- [3] Open the legs.
- [4] Remove the wing nut and screw attached to the Double-Braced Legs.
- [5] Attach the standard-gauge tubing to the Double-Braced Legs.
- [6] Reattach the wing nut and screw.
- [7] Tighten the wing nut and screw.



9 Setup Example

