

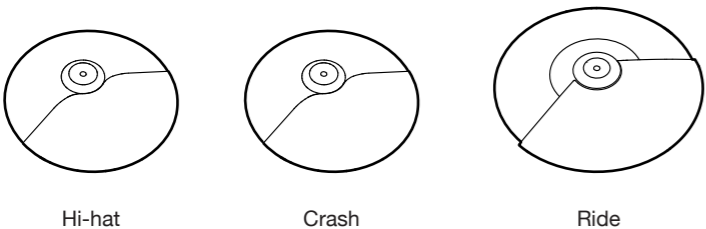
Setup Manual

WARNING

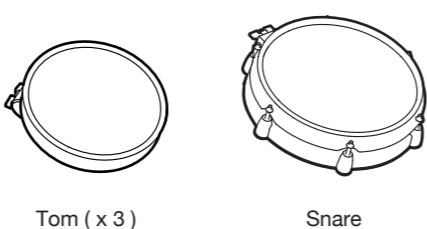
- Drum key can be pinched when adjusting clamps with drum key. Operate carefully.
- Be careful around pipe ends, inside the pipe, screw ends and metal shavings...etc. May injure your fingers

Check the included items

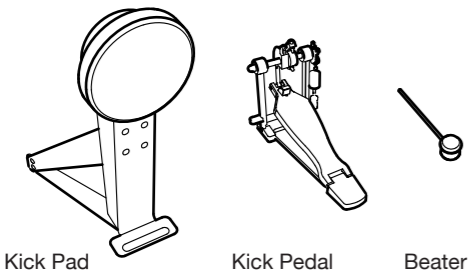
CYMBAL PAD



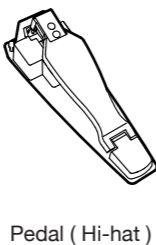
DRUM PAD



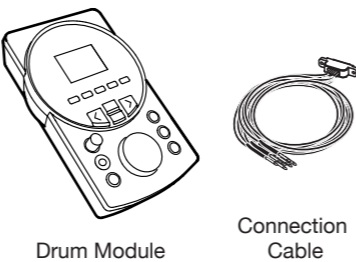
KICK (PAD + PEDAL)



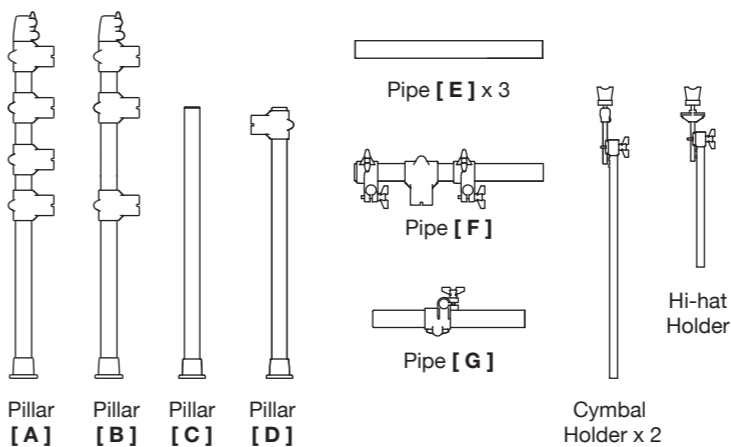
PEDAL



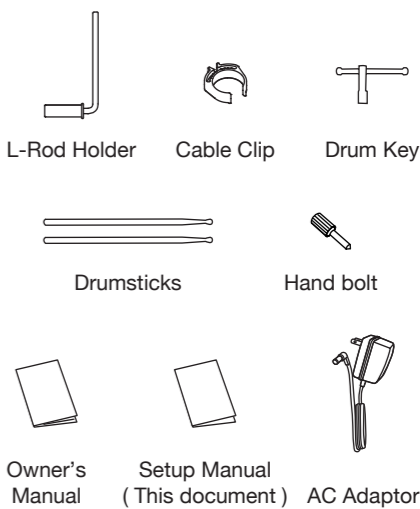
MODULE



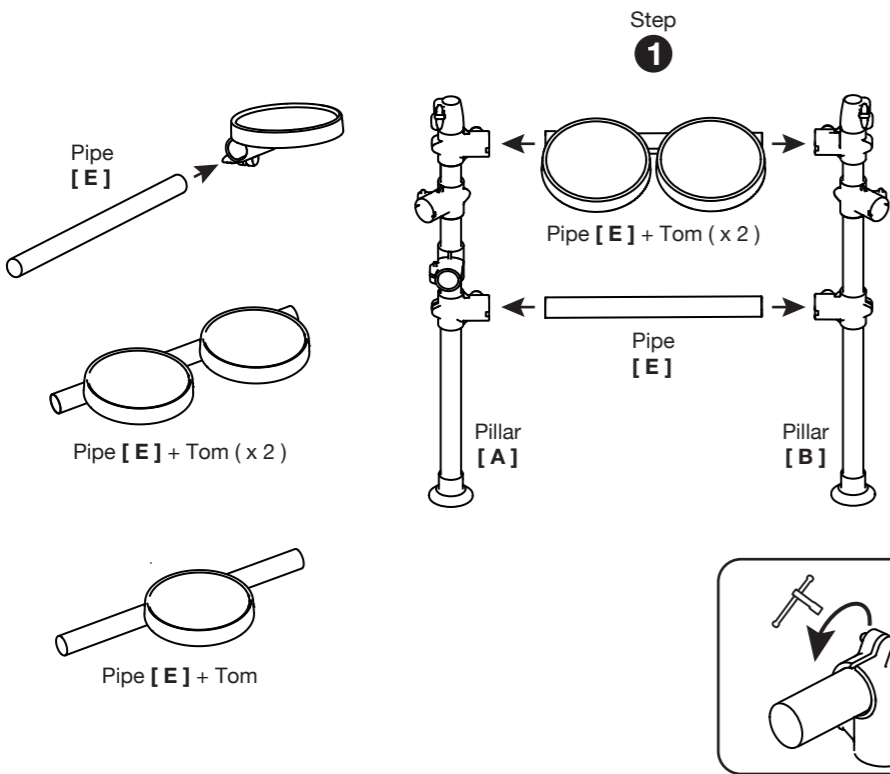
DRUM STAND



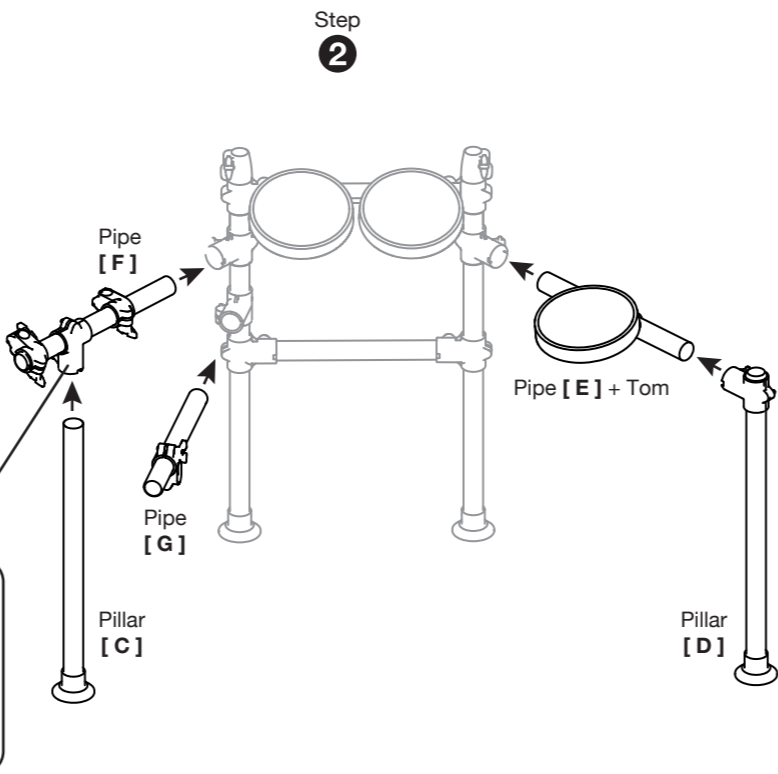
ACCESSORIES



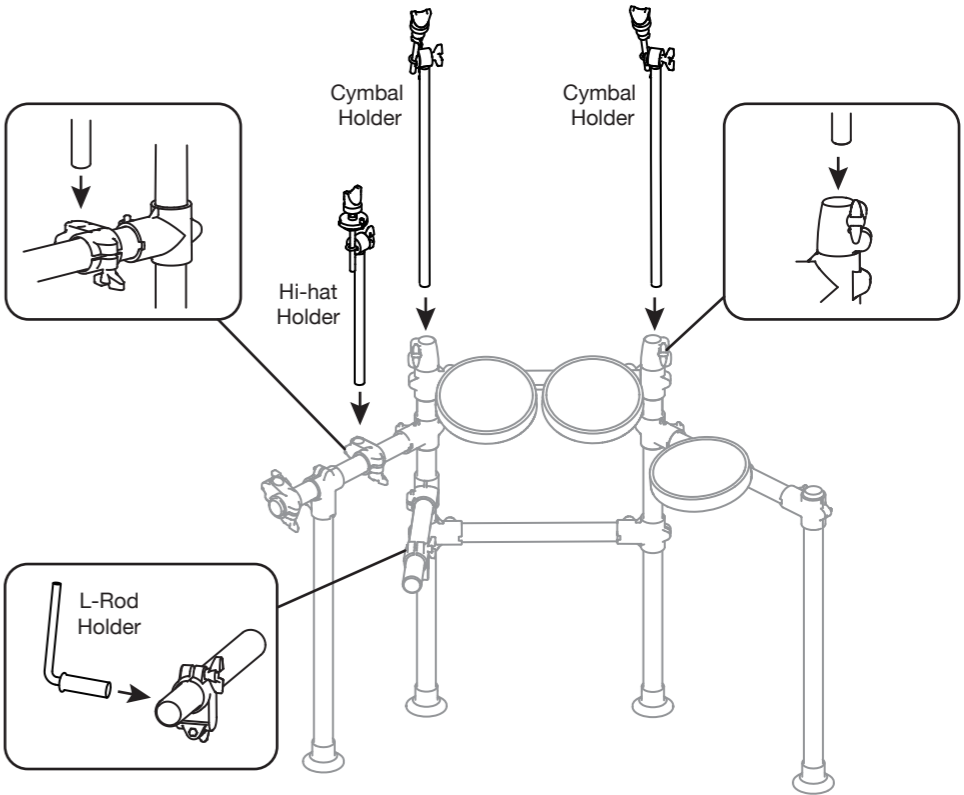
Attach the Tom Pads



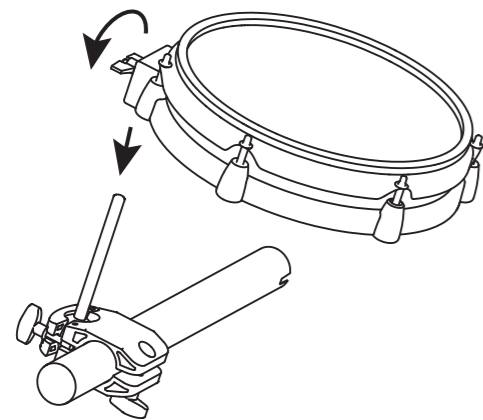
Assemble the Drum Stand



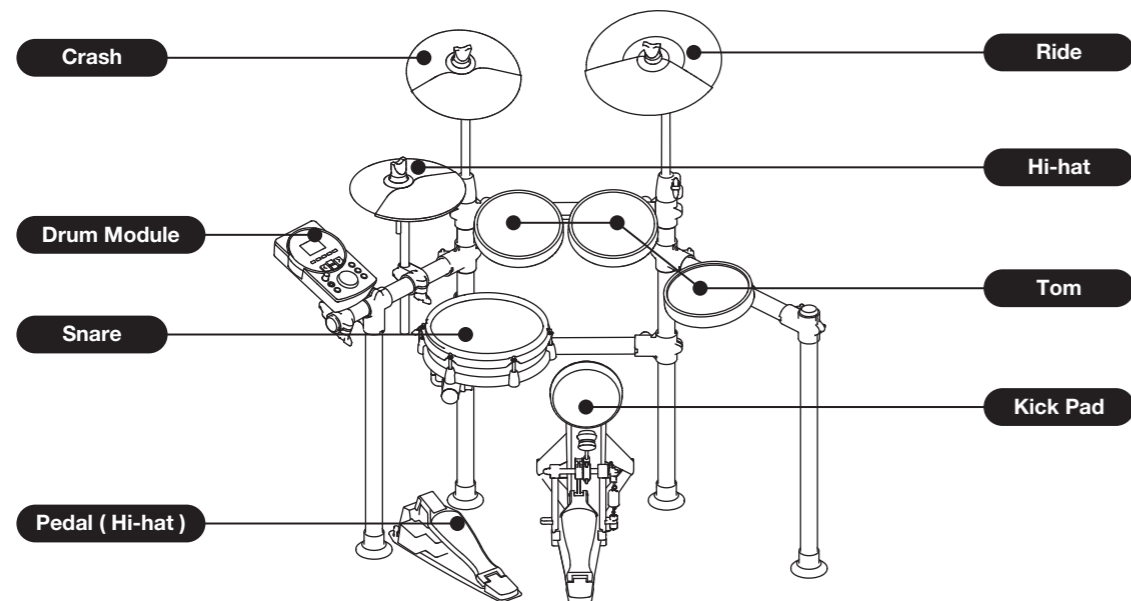
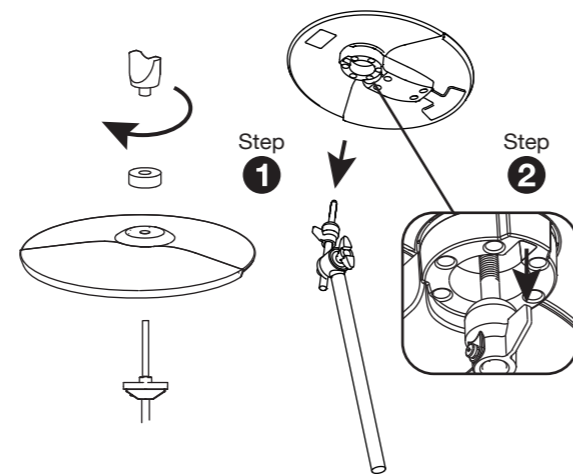
Attach the Pad, Hi-hat and Cymbal Holders



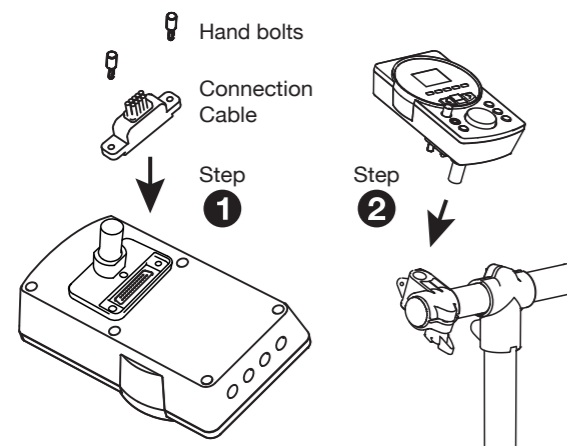
Attach the Drum Pad (Snare)



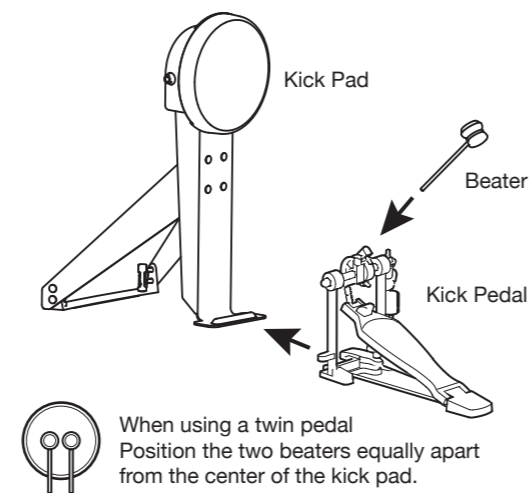
Attach the Cymbal Pad



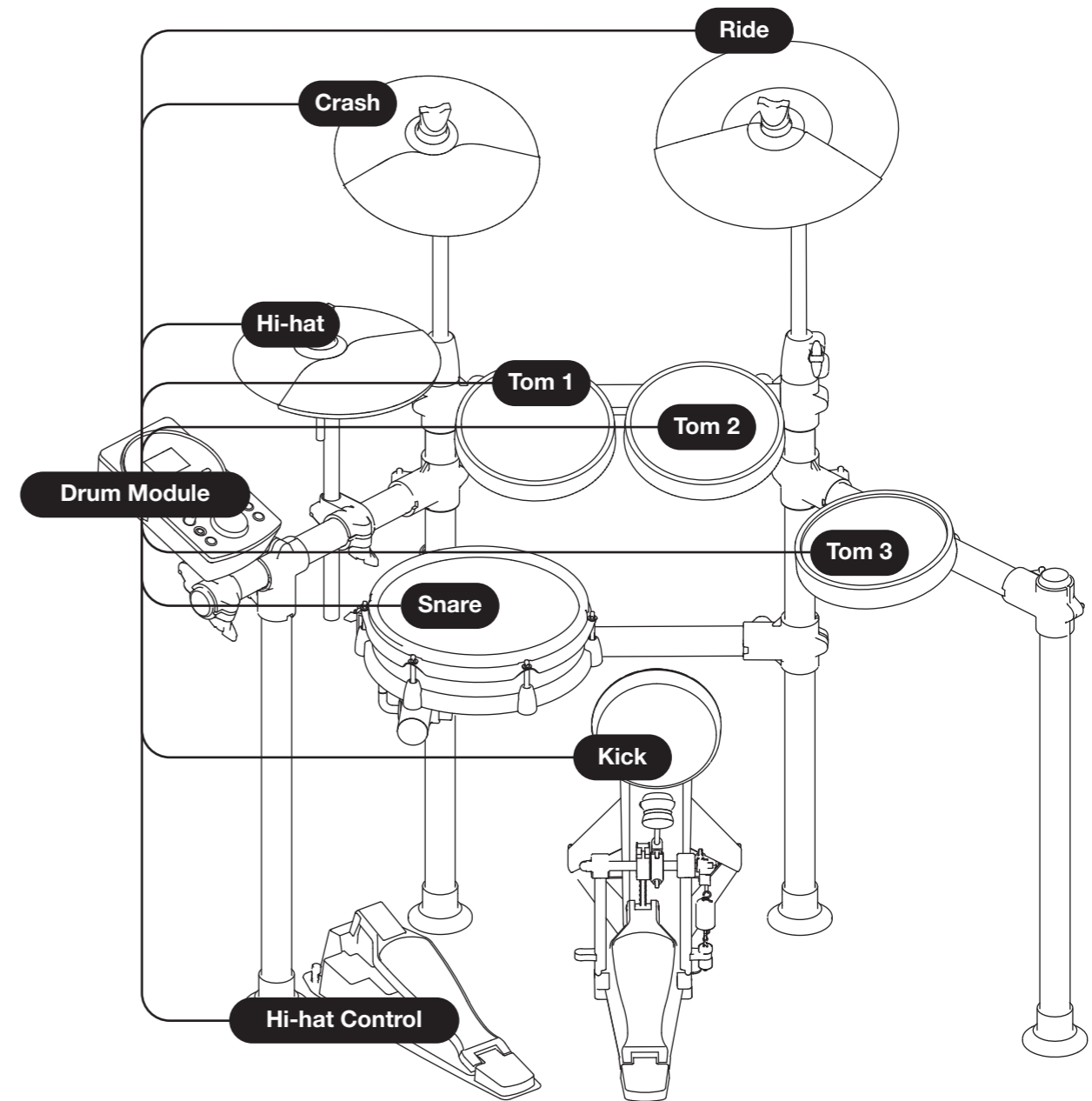
Attach the Drum Module



Attach the Kick Pad



Connect the Pads



Connect the Pads to the Drum Module with labelled cables.