

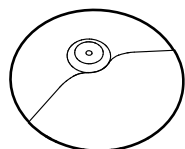
Setup Manual

WARNING

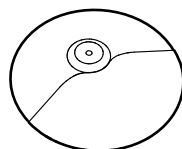
- Drum key can be pinched when adjusting clamps with drum key. Operate carefully.
- Be careful around pipe ends, inside the pipe, screw ends and metal shavings...etc. May injure your fingers

Check the included items

CYMBAL PAD

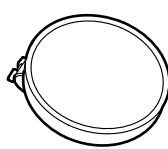


Hi-hat



Crash / Ride
(x 2)

DRUM PAD

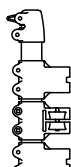


Tom
(x 3)

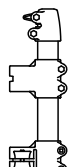


Snare
(x 1)

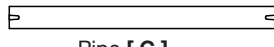
DRUM STAND



Pillar
[A]



Pillar
[B]



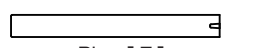
Pipe [C]



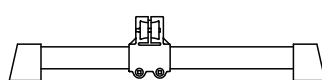
Pipe [D]



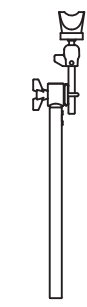
Pipe [E]



Pipe [F]



Pipe [G] x 2



Cymbal
Holder x 3

ACCESSORIES



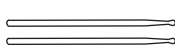
Cable Band x 5



Drum Key



Hand bolt



Drumsticks



L-Rod Holder



Owner's
Manual

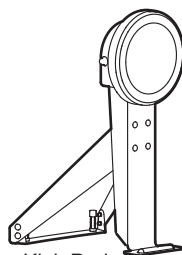


Setup Manual
(This document)

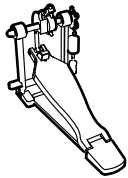


AC Adaptor

KICK (PAD + PEDAL)



Kick Pad

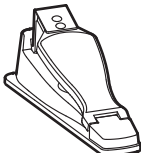


Kick Pedal



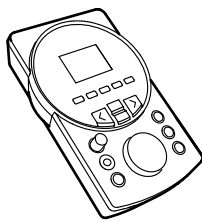
Beater

PEDAL



Pedal (Hi-hat)

MODULE

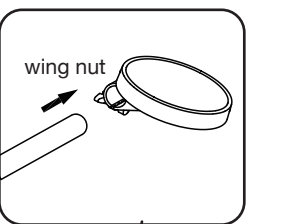


Drum Module



Connection
Cable

Attach the Tom Pads



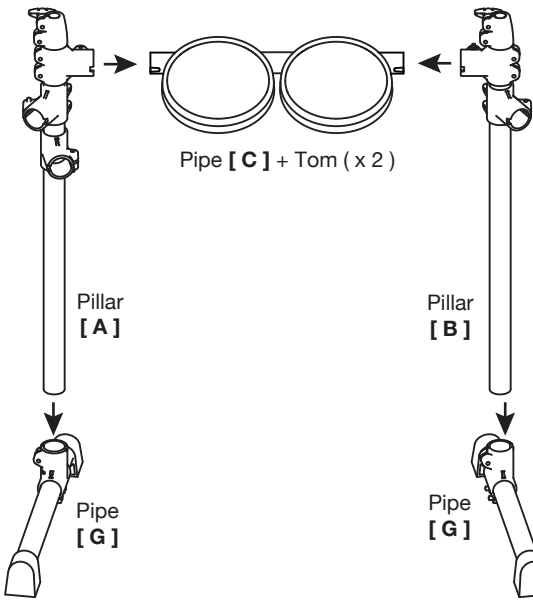
Pipe [C] + Tom (x 2)

Pipe [F] + Tom

L-Rod Holder + Snare

Assemble the Drum Stand

Step
1



Pipe [C] + Tom (x 2)

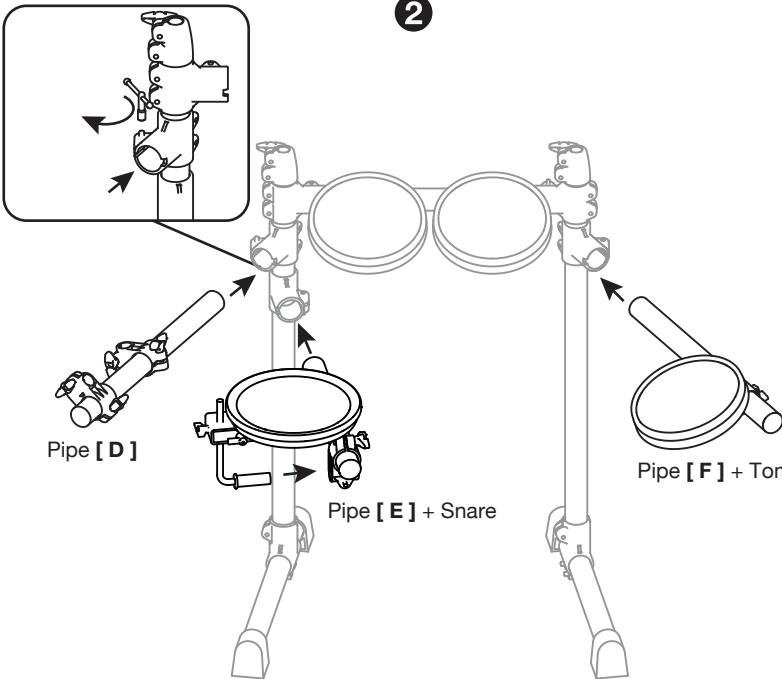
Pillar
[A]

Pipe
[G]

Pillar
[B]

Pipe
[G]

Step
2

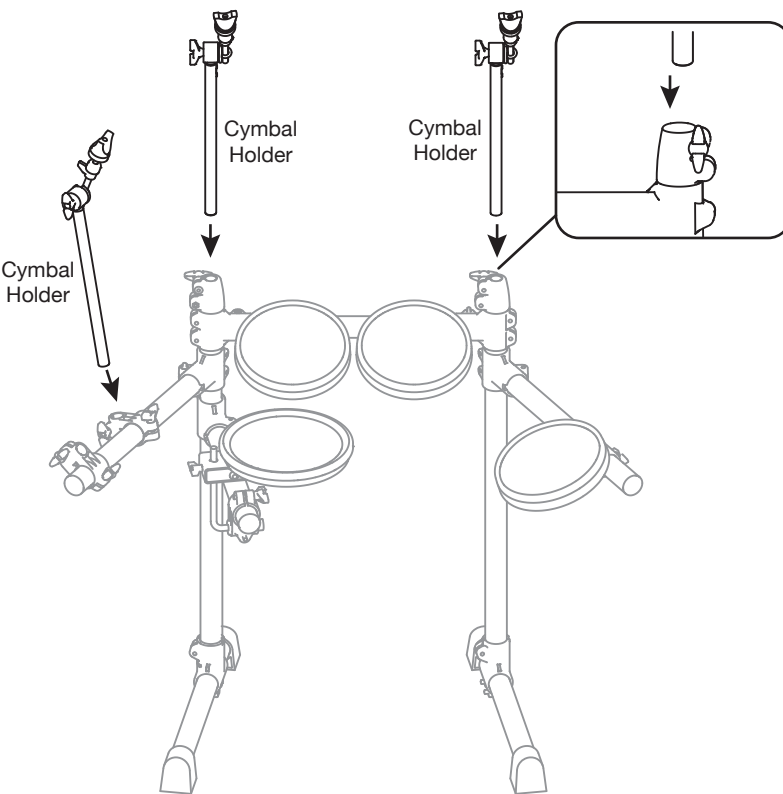


Pipe [D]

Pipe [E] + Snare

Pipe [F] + Tom

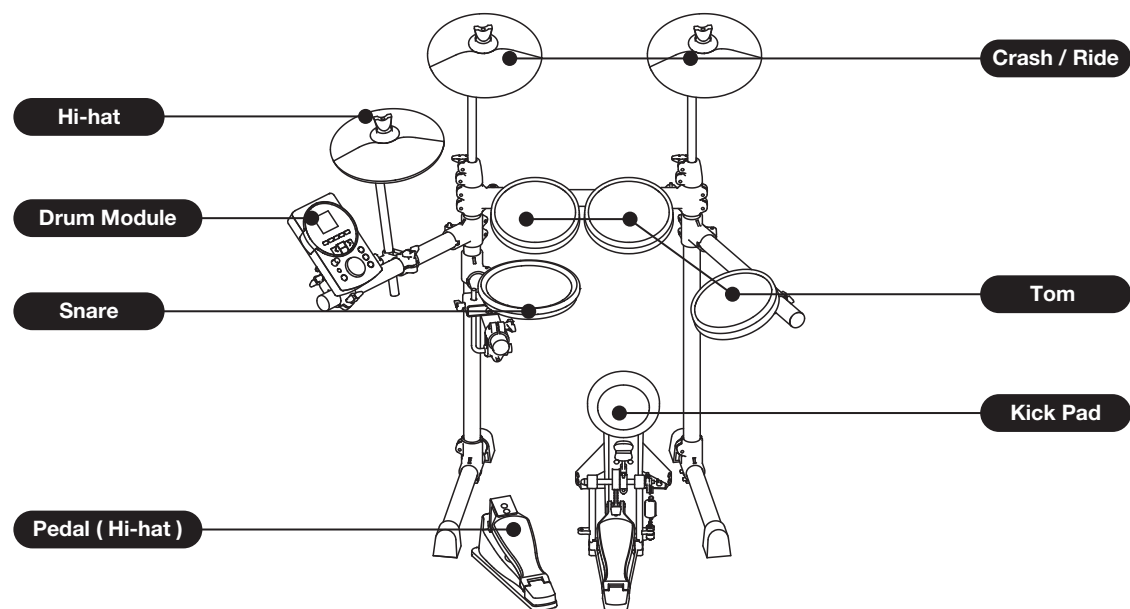
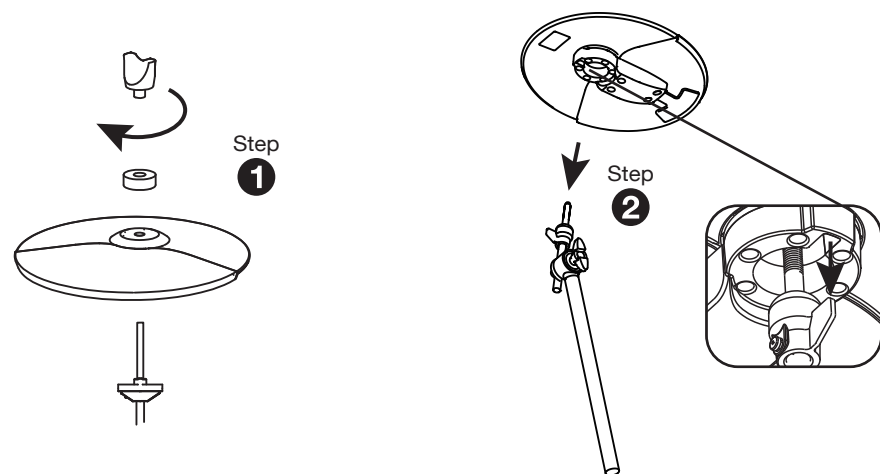
Attach the Pad, Hi-hat and Cymbal Holders



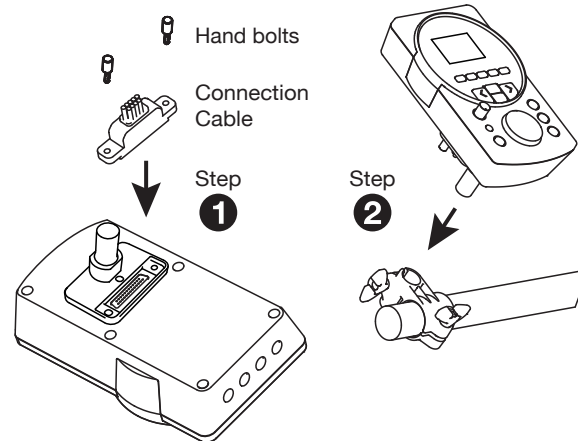
Cymbal
Holder

Cymbal
Holder

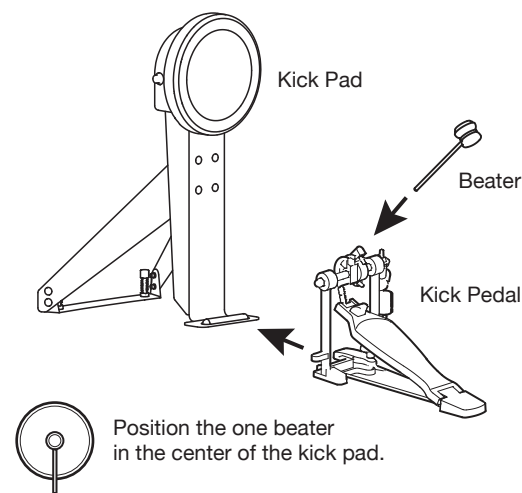
Attach the Cymbal Pad



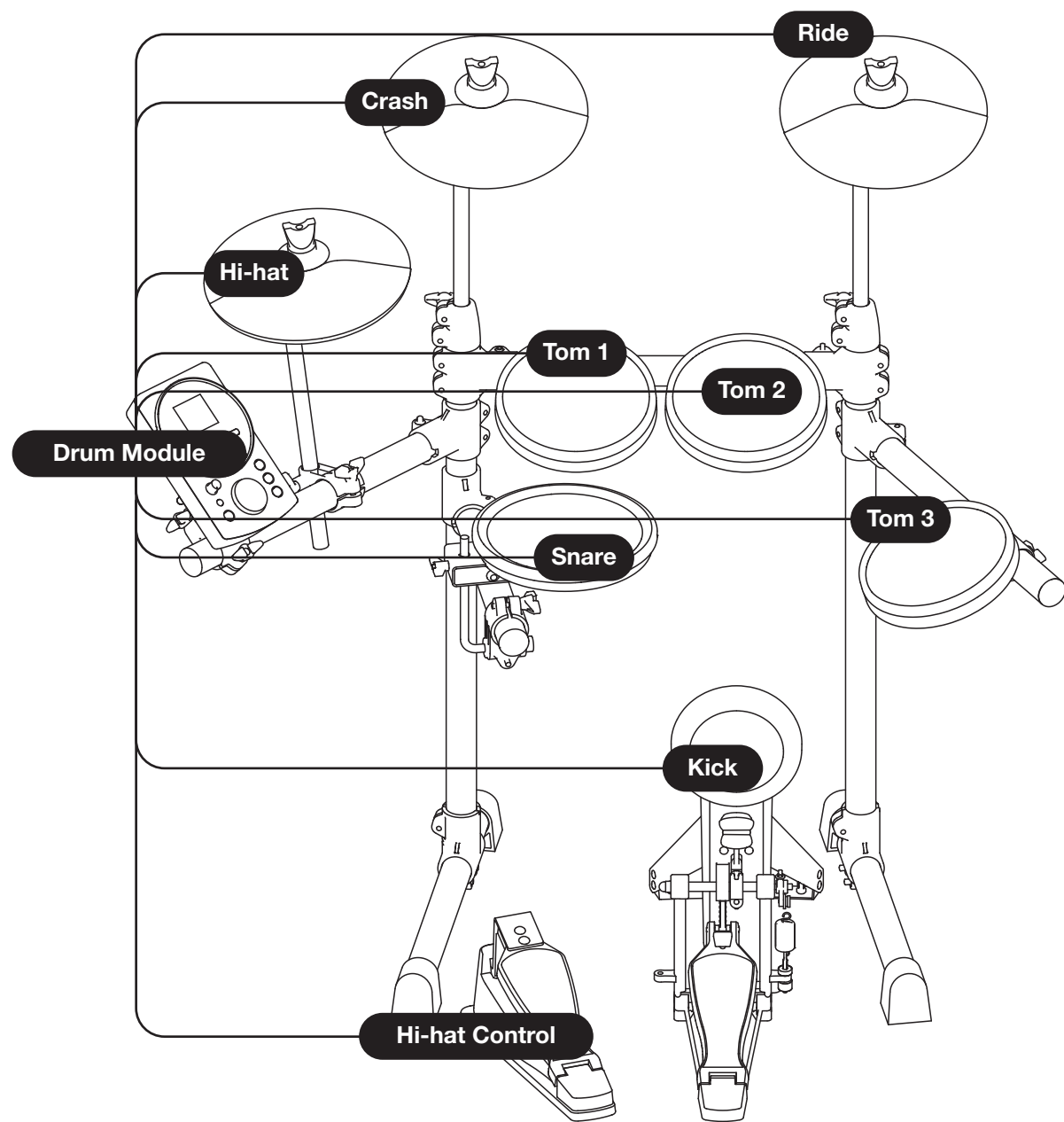
Attach the Drum Module



Attach the Kick Pad



Connect the Pads



Connect the Pads to the Drum Module with labelled cables.