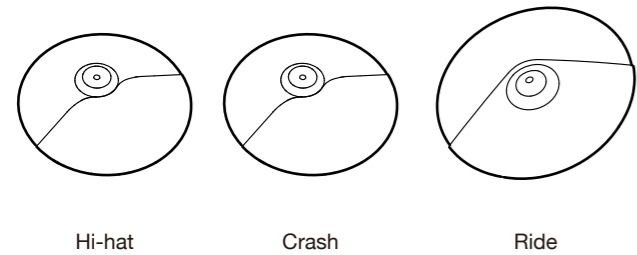


Setup Guide

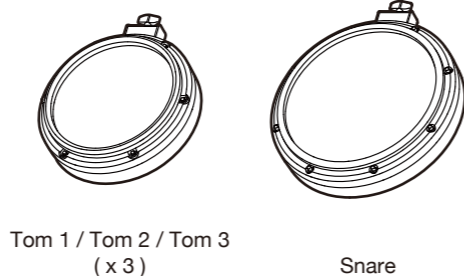
- WARNING:**
- Drum key may pinch your fingers. Be careful when adjusting clamps with drum key.
 - Mind the sharp ends, such as pipe ends and screw ends. They may injure your fingers.

Check the included items

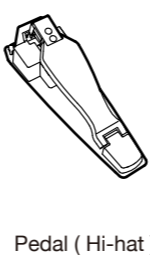
CYMBAL PAD



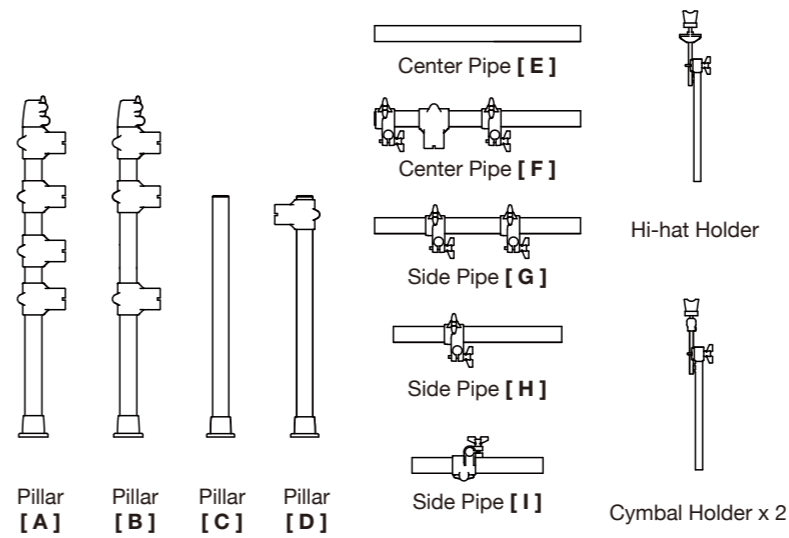
DRUM PAD



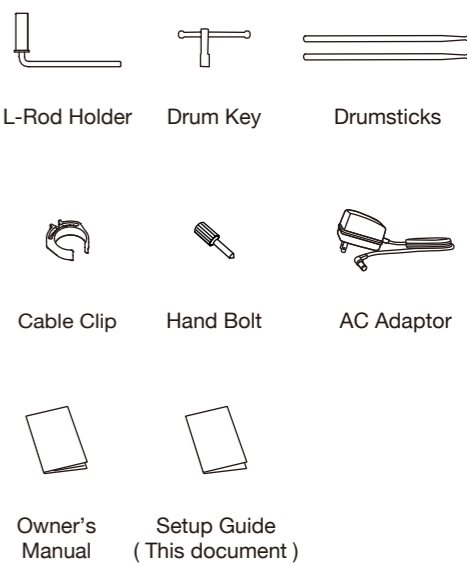
PEDAL



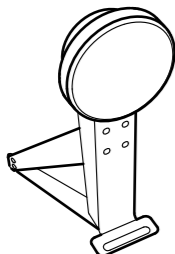
DRUM STAND



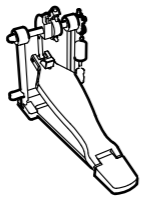
ACCESSORIES



KICK PAD



KICK PEDAL



Kick Pedal



Beater

MODULE

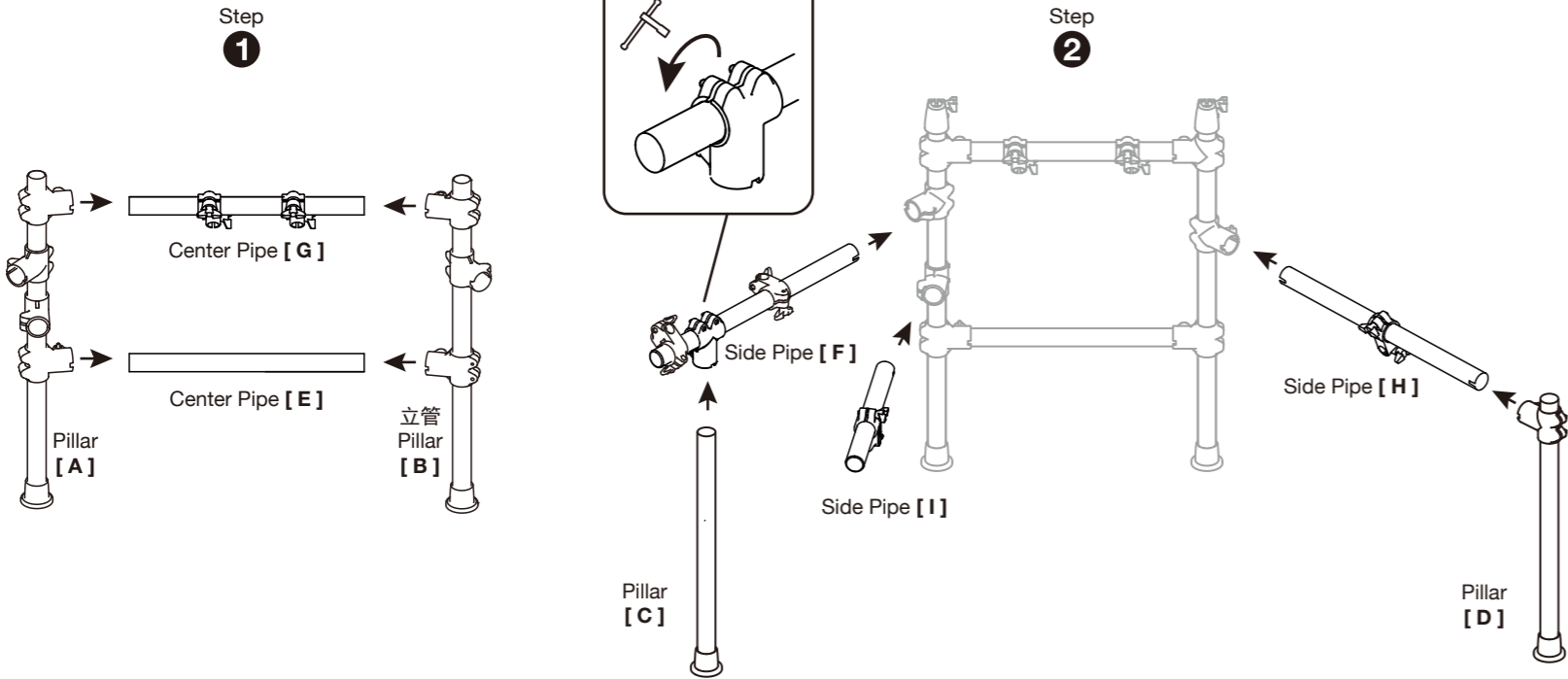


Drum Module

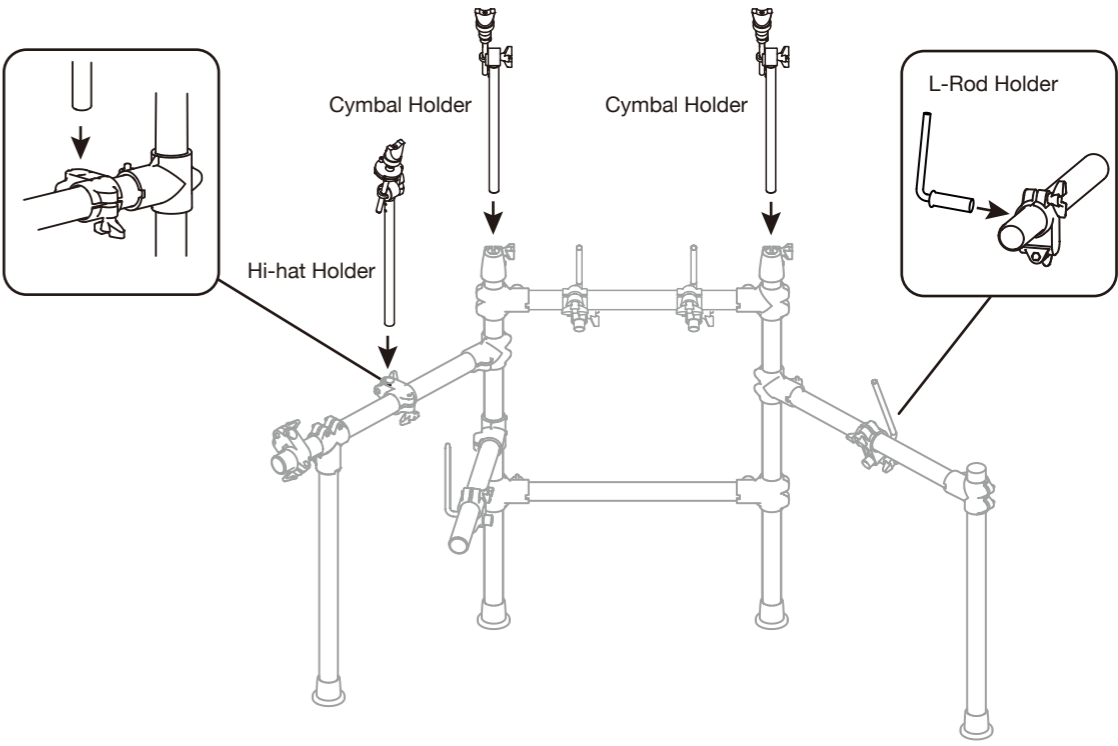


Connection Cable

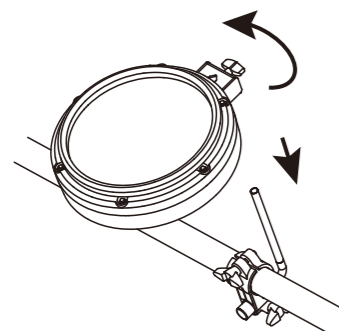
Assemble the Drum Stand



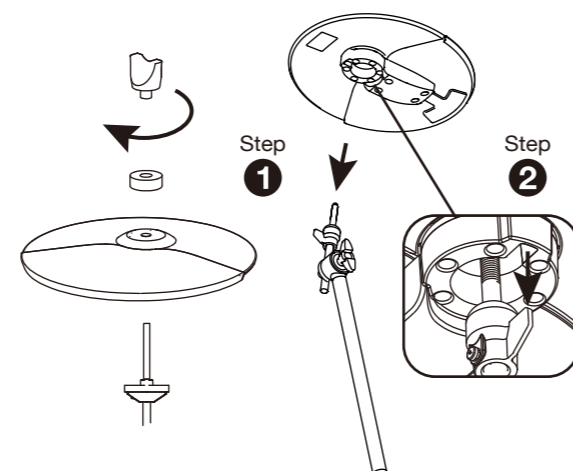
Attach the Pad, Hi-hat and Cymbal Holders



Attach the Drum Pad



Attach the Cymbal Pad



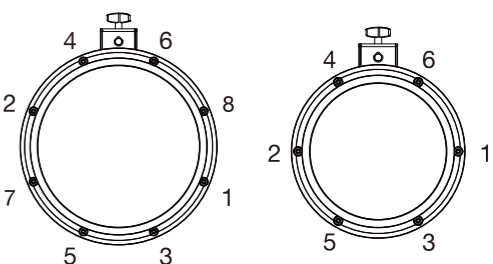
Adjust the Head Tension

Please adjust the head tension before you start to perform. By adjusting the head tension, you can make the pad respond to your strikes, just like playing an acoustic drum.

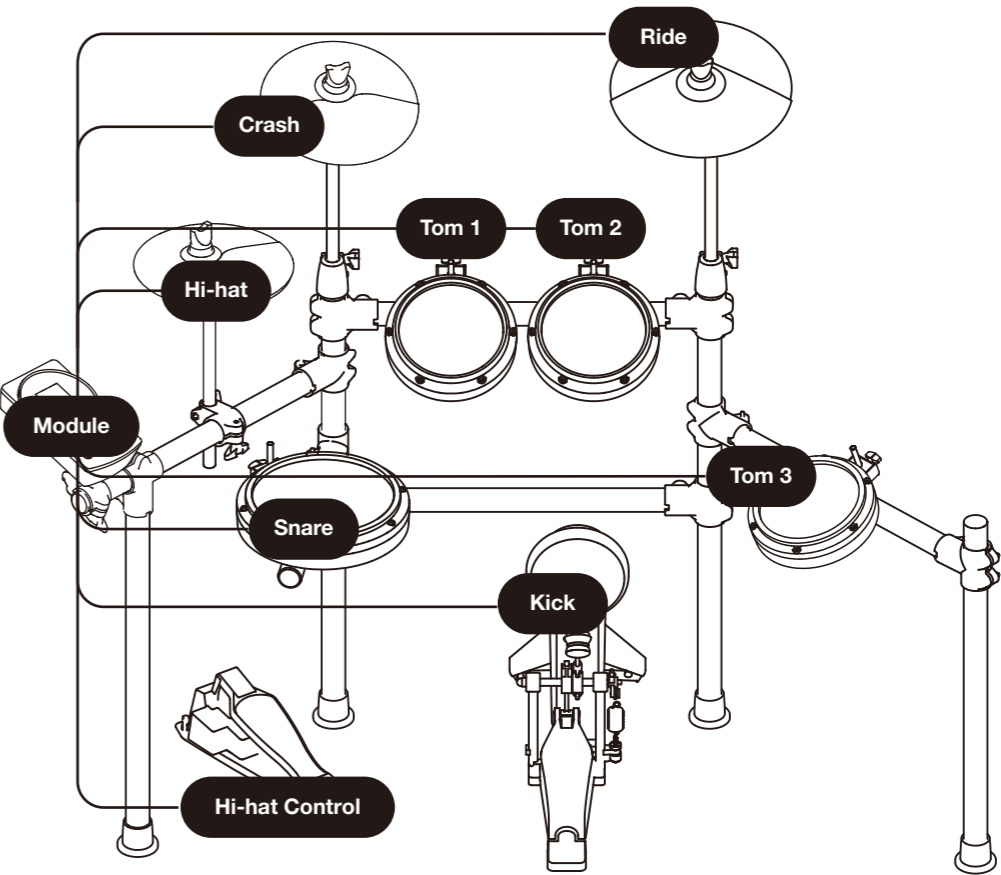
1. Follow the order indicated in the image. Turn each tension bolt around the head little by little.
2. Adjust the tightness of each bolt so as to make the pad tension even.

Notes:

1. Always adjust each tension bolt little by little. Turning the bolts too much at one step may result in uneven head tension.
2. The head tension may change after using for some time. Please adjust the head tension whenever it is necessary.



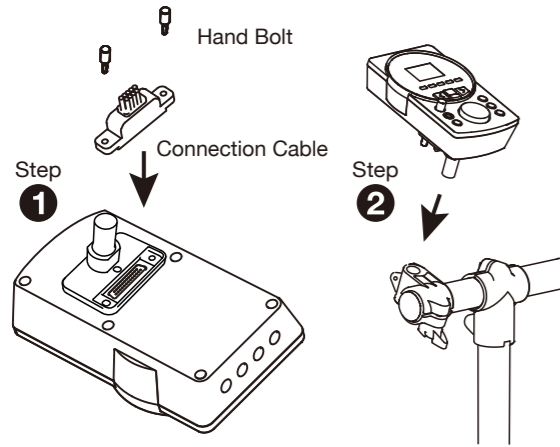
Connect the Pads



Connect the Pads to the Module with labelled cables.

MZ528_SG01EN

Attach the Module



Attach the Kick Pad

