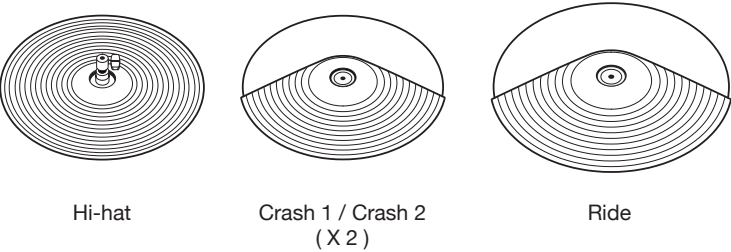


Setup Guide

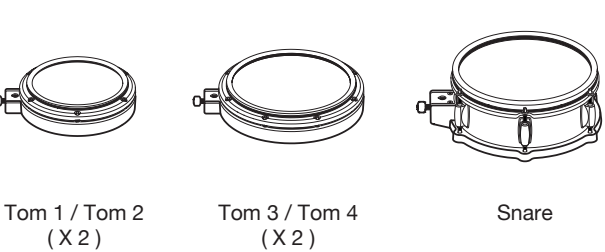
WARNING •Drum key may pinch your fingers.Be careful when adjusting clamps with drum key.
•Mind the sharp ends,such as pipe ends and screw ends.They may injure your fingers.

Check the included items

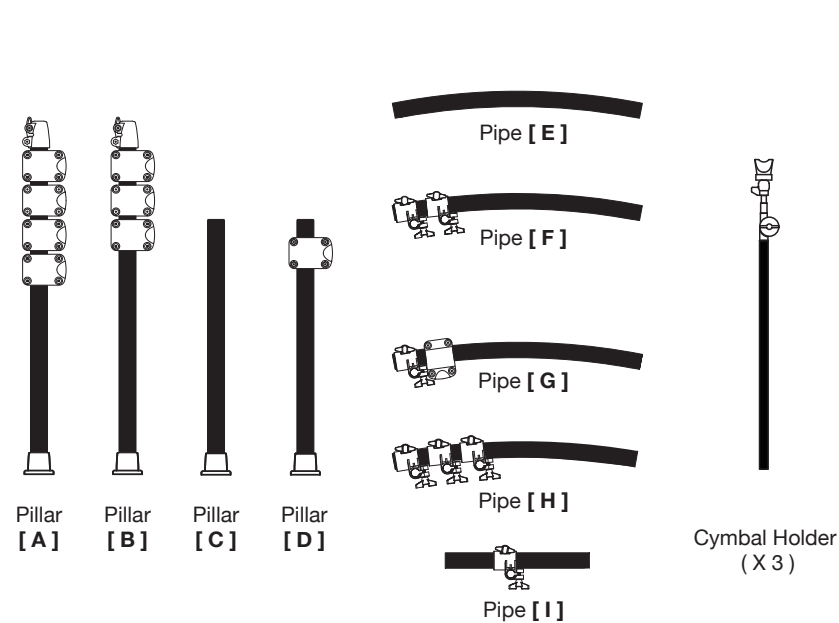
CYMBAL PAD



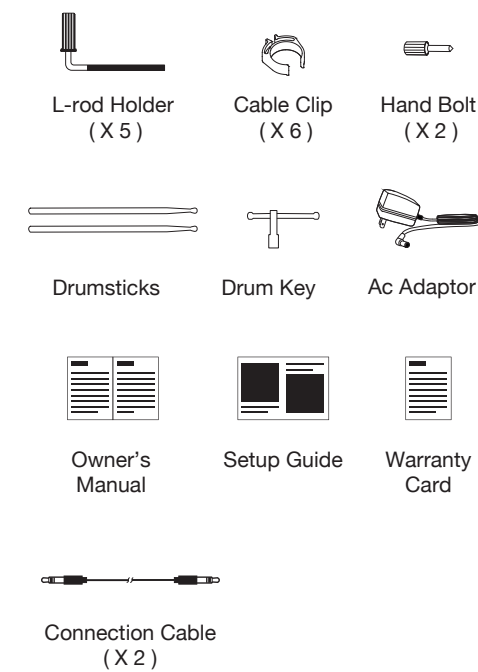
DRUM PAD



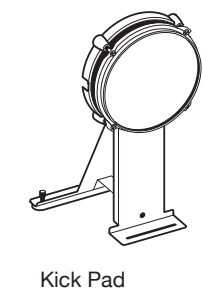
DRUM STAND



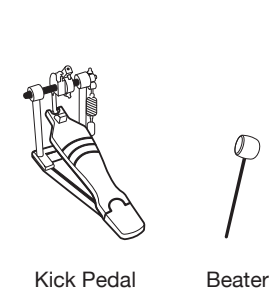
ACCESSORIES



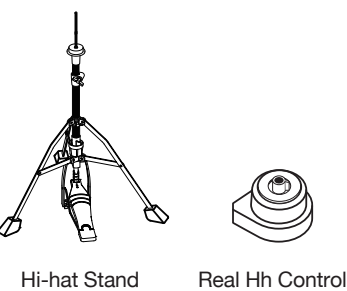
KICK PAD



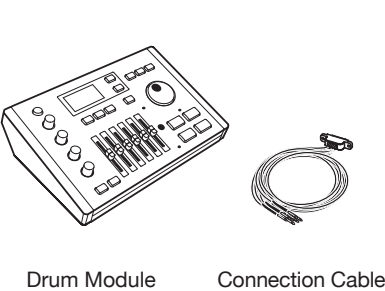
KICK PEDAL



HI-HAT STAND

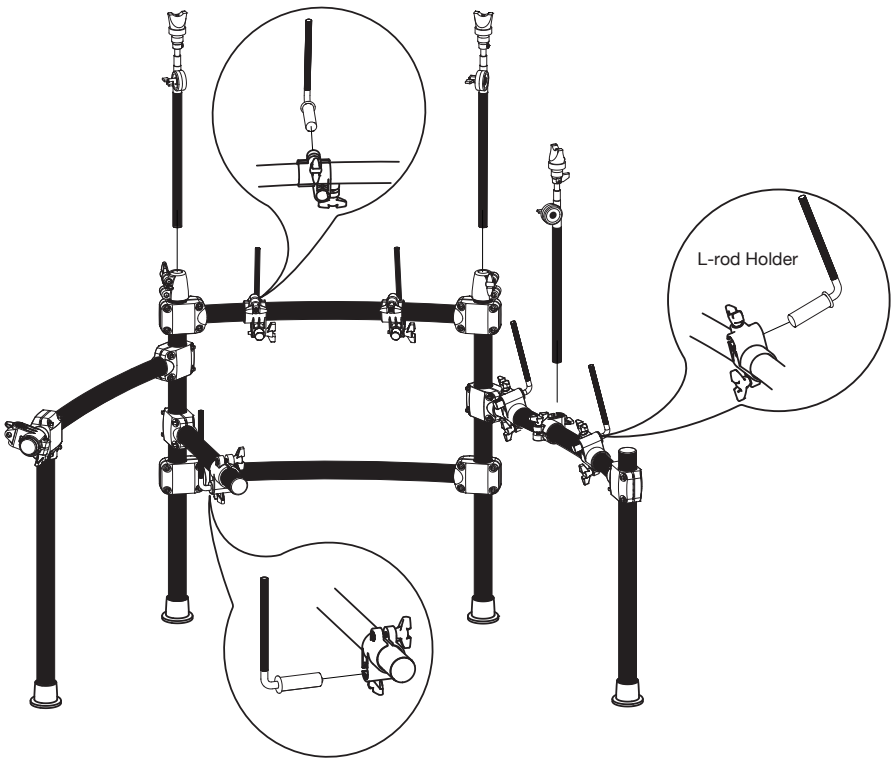
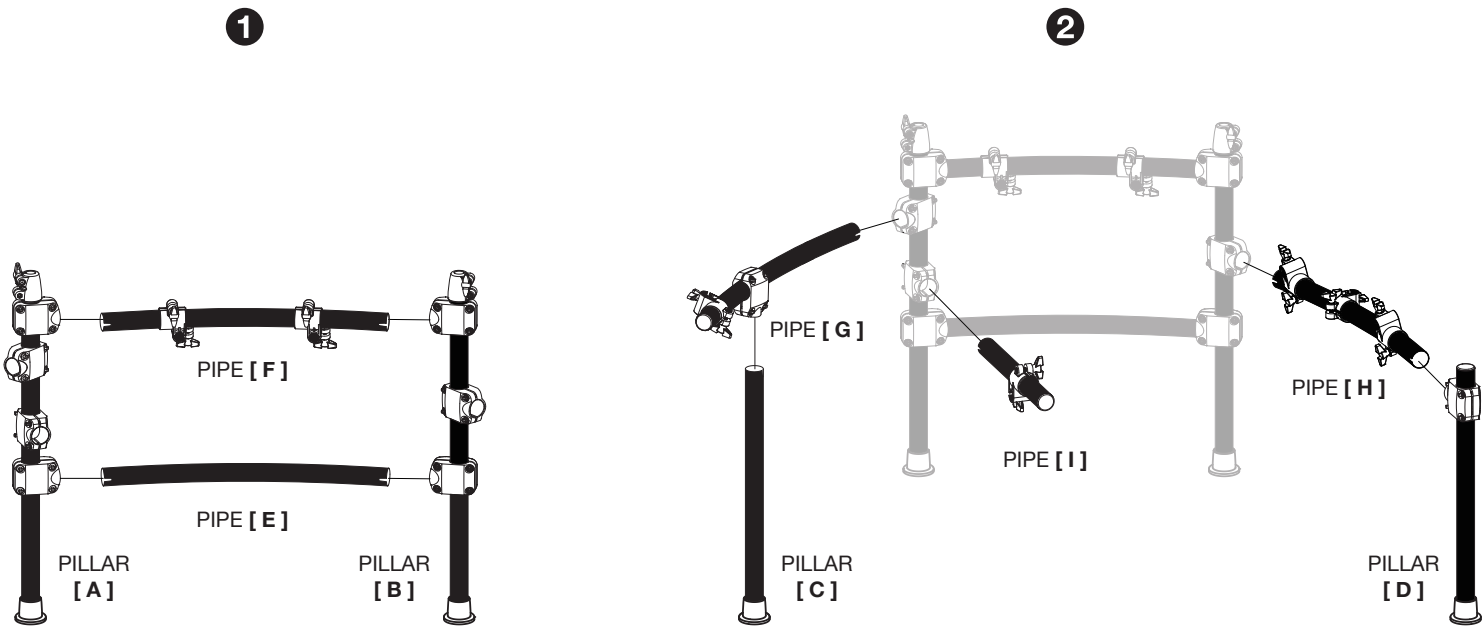


MODULE

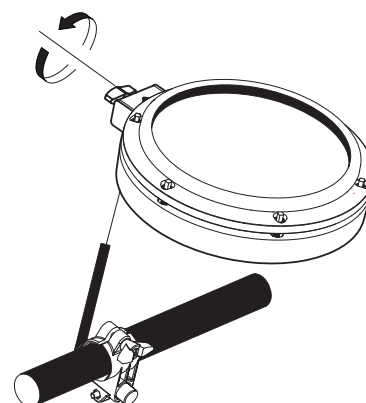


Assemble the Drum Stand

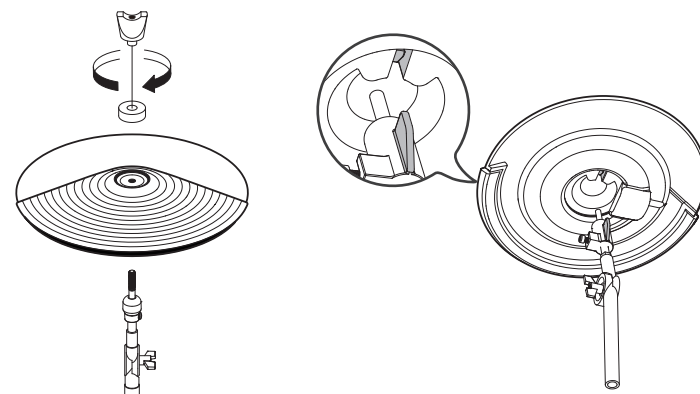
Attach the pad and Cymbal Holders



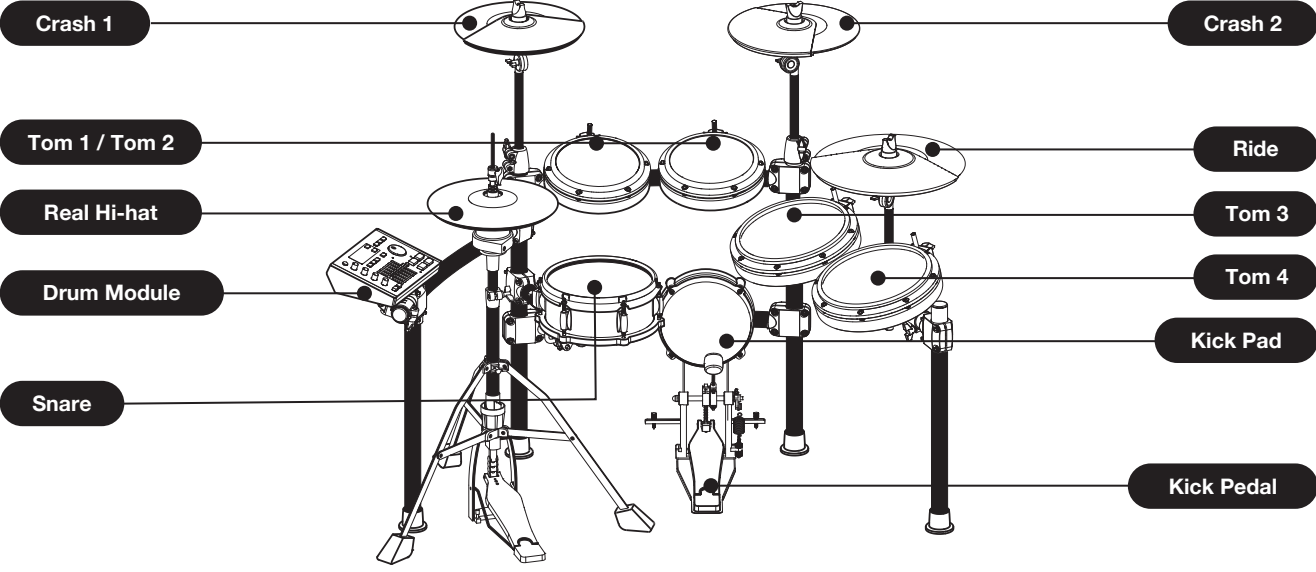
Attach the Drum Pad



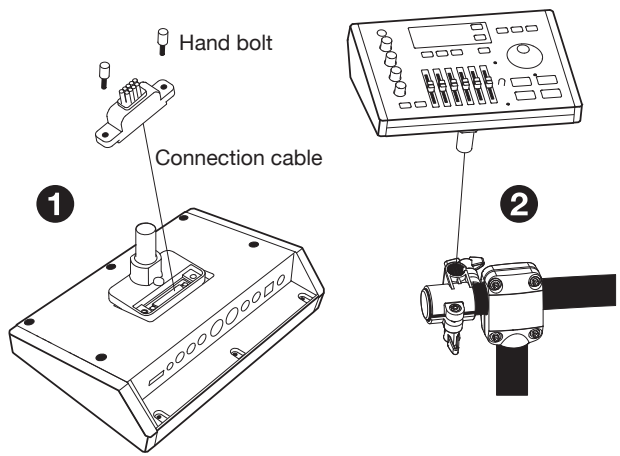
Attach the Cymbal Pad



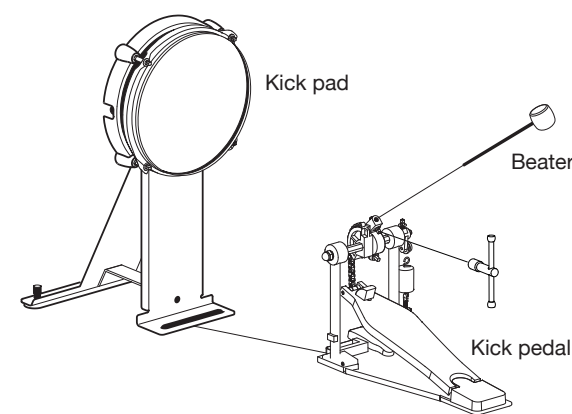
! Note: The cymbal position pin should line up to fit into the position slot.



Attach the Module



Attach the Kick Pad



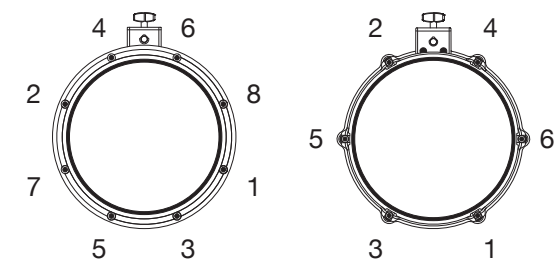
Adjust the Head Tension

Please adjust the head tension before you start to perform. By adjusting the head tension, you can make the pad respond to your strikes, just like playing an acoustic drum.

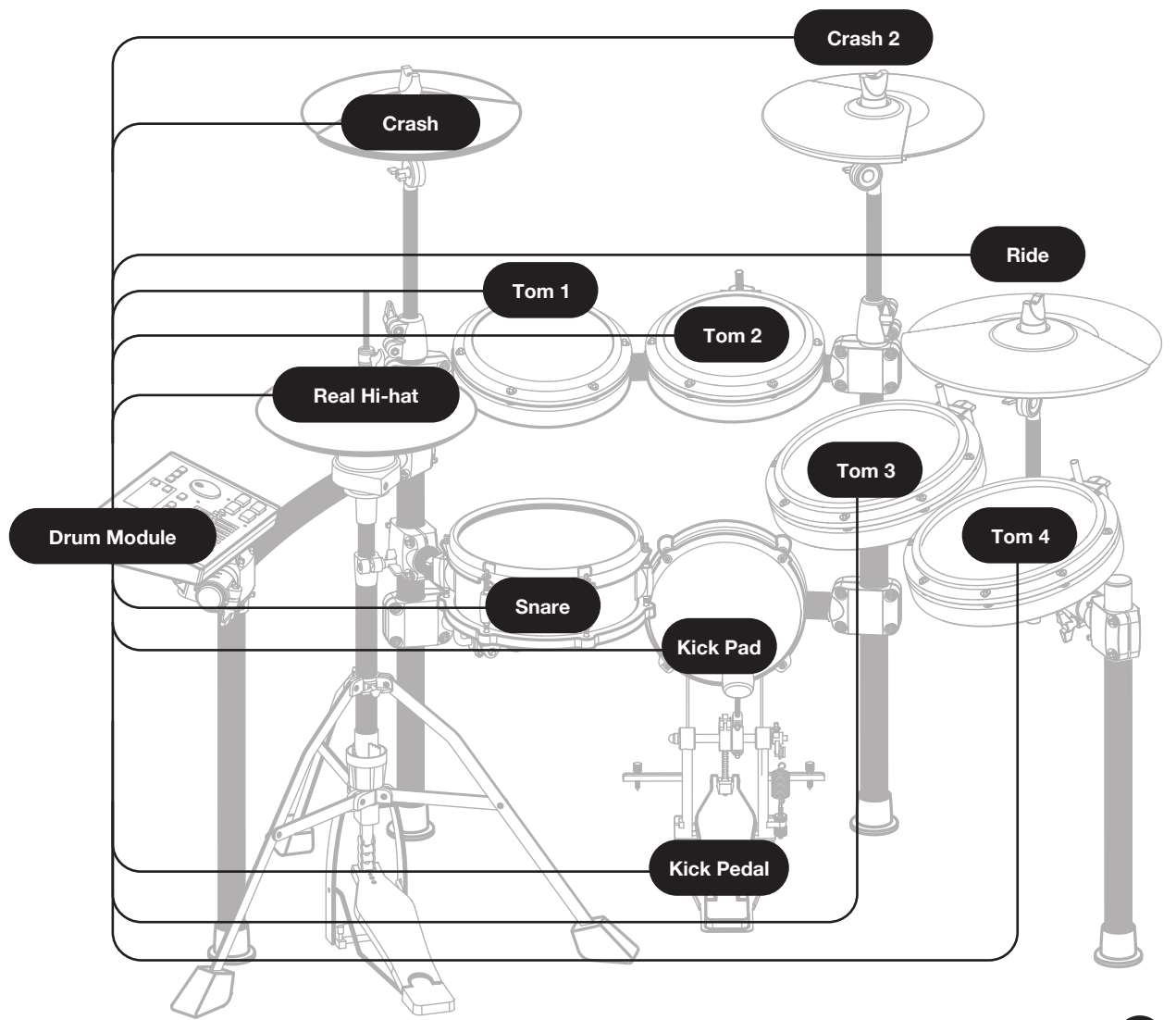
1. Follow the order indicated in the image. Turn each tension bolt around the head little by little.
2. Adjust the tightness of each bolt so as to make the pad tension even.

! Notes:

1. Always adjust each tension bolt little by little. Turning the bolts too much at one step may result in uneven head tension.
2. The head tension may change after using for some time. Please adjust the head tension whenever it is necessary.



Connect the Pad



Connect the Pads to the MODULE with labelled cables.

